



Border to Bayshore Bikeway Update

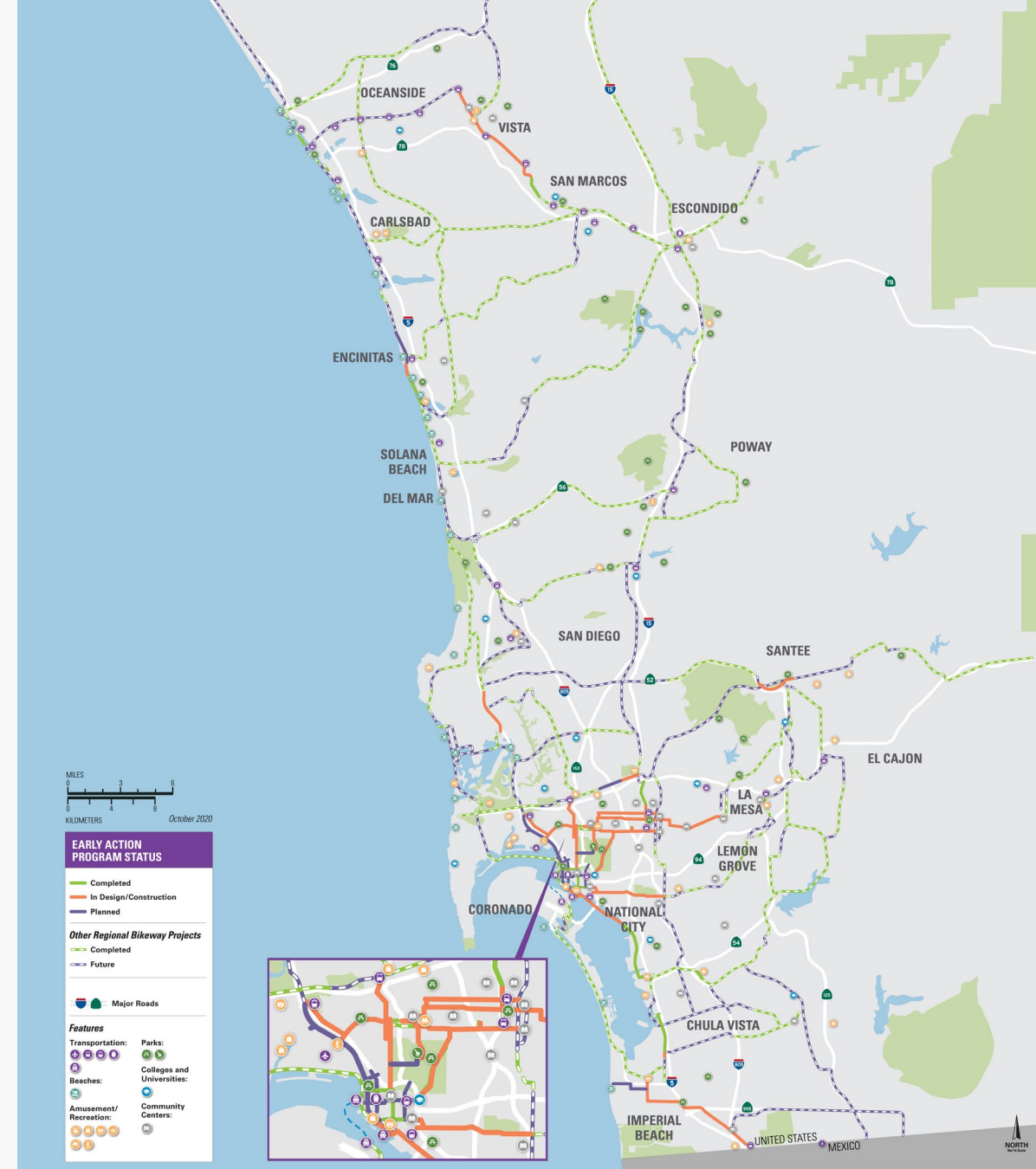


Chris Romano, AICP, LEED AP ND (he | him | his)

San Ysidro Recreation Advisory Group | 12/14/2020

Regional Network

- \$200 million in *TransNet* funds
- Building 77 linear miles of bikeways
- 70 of 77 miles either open or under design
- 8.8 miles open to date



Safe, Low Stress Experience



- Safe movement of people
- Protected bikeways provide separation
- Traffic calming to reduce speeds
- Challenges in urban environments due to limited space



Preferred Route



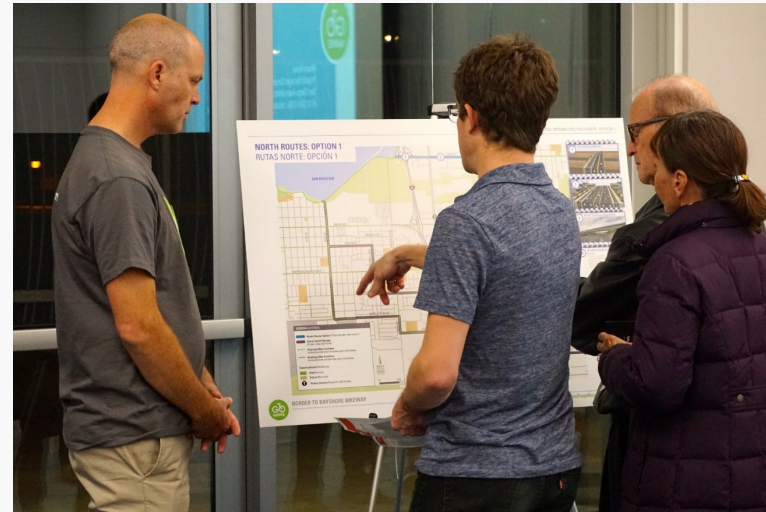
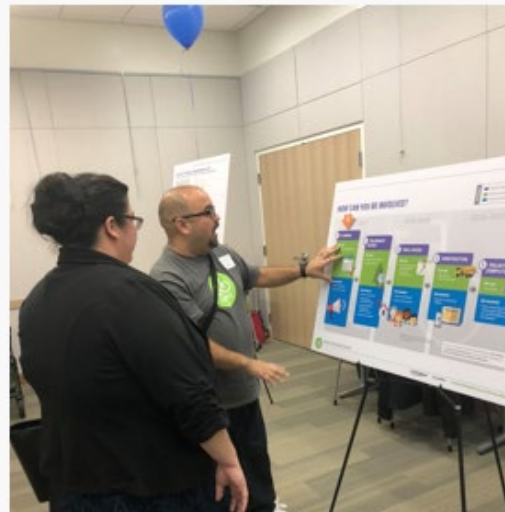
- 6.5-Mile urban bikeway
- Connects San Ysidro Port of Entry to the Bayshore Bikeway
- Provides access to many destinations in between



Community Input



- 3 community workshops
- CEQA Open House + Public Hearing
- Presentations to planning & community groups and others as requested



San Ysidro Community Park – Design

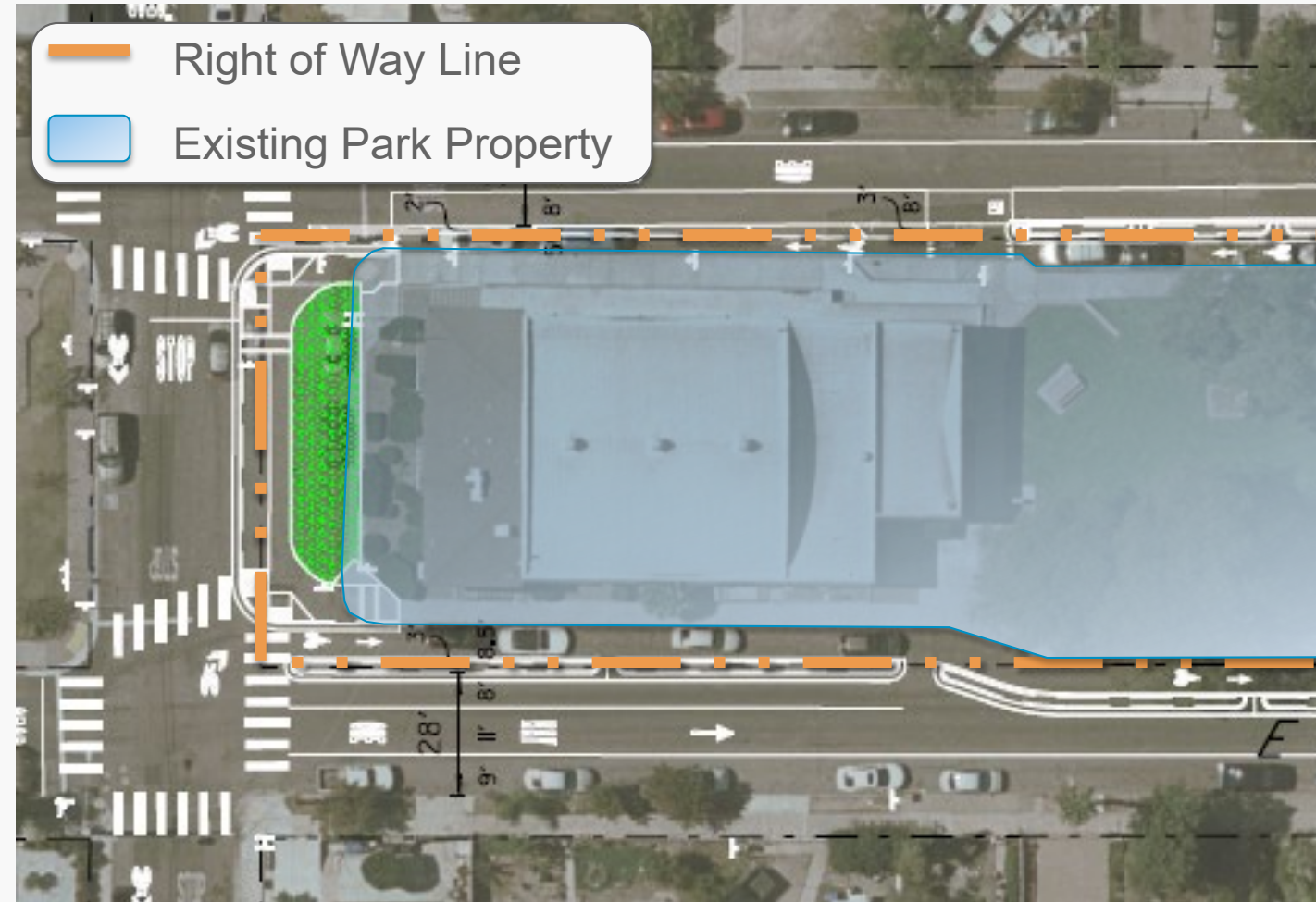


San Ysidro Community Park – Parking Change

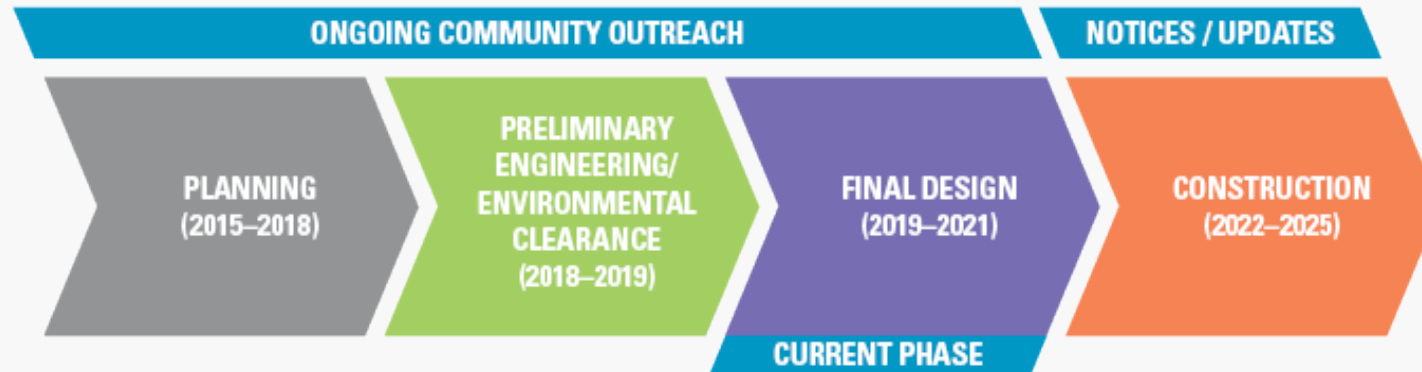


San Ysidro Community Park – Right of Way

- Existing Road is on Park Property, maintained by Transportation & Storm Water
- Proposed Improvements remain in roadway, continue to be maintained by Transportation & Storm Water
- Improvements include
 - Protected bikeways
 - Stormwater / Landscape Feature



Schedule





For More Information

Chris Romano, AICP, LEED AP ND (he | him | his) | Chris.Romano@sandag.org
KeepSanDiegoMoving.com/BordertoBayshore



GObyBIKE@sandag.org



(833) 899-BIKE (2453)



KeepSanDiegoMoving.com/SubscribeGObyBIKE



[@SANDAGregion](#) | [#GObyBIKEsd](#)



[@SANDAG](#) | [#GObyBIKEsd](#)



[SANDAGregion](#) | [#GObyBIKEsd](#)



[SANDAGregion](#)