

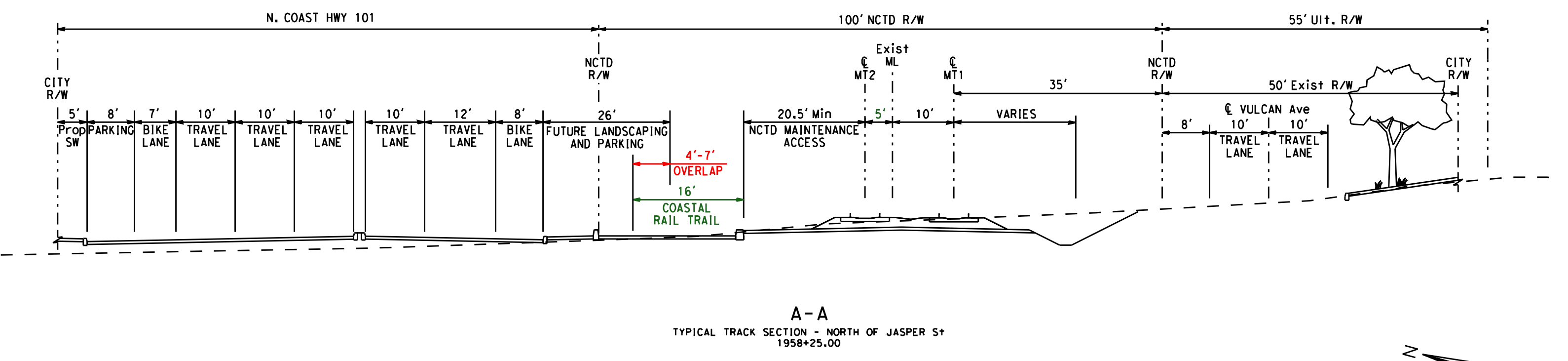
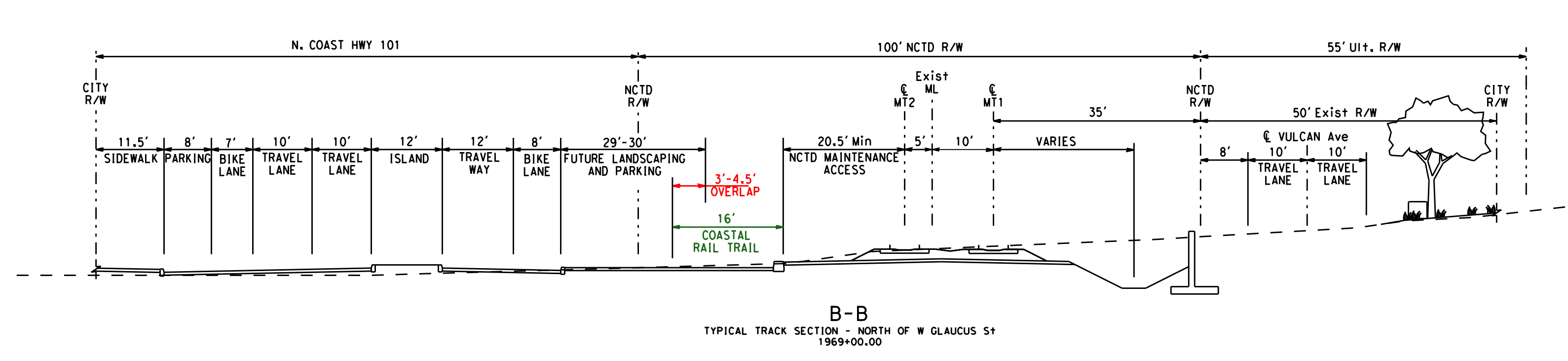
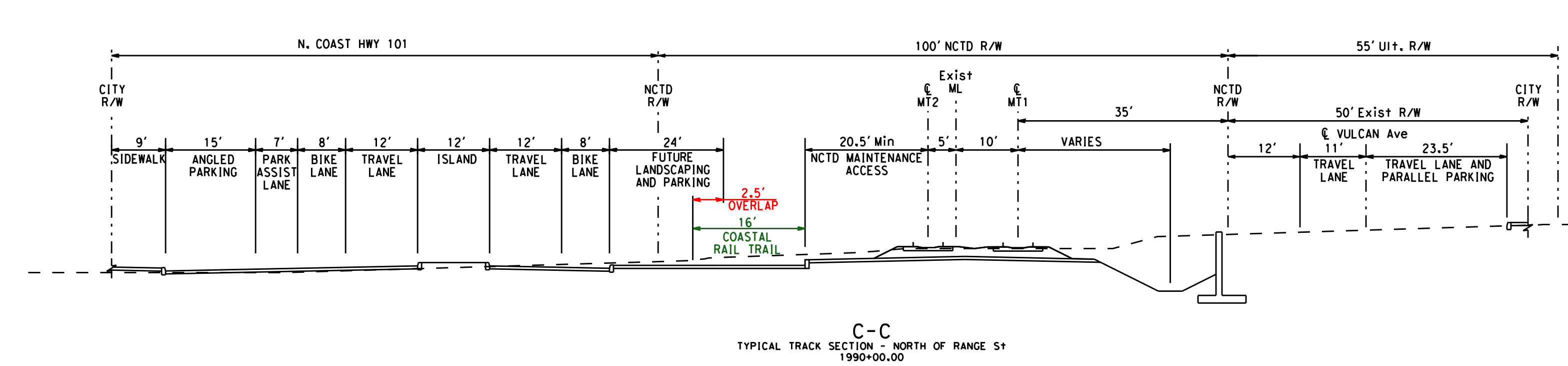
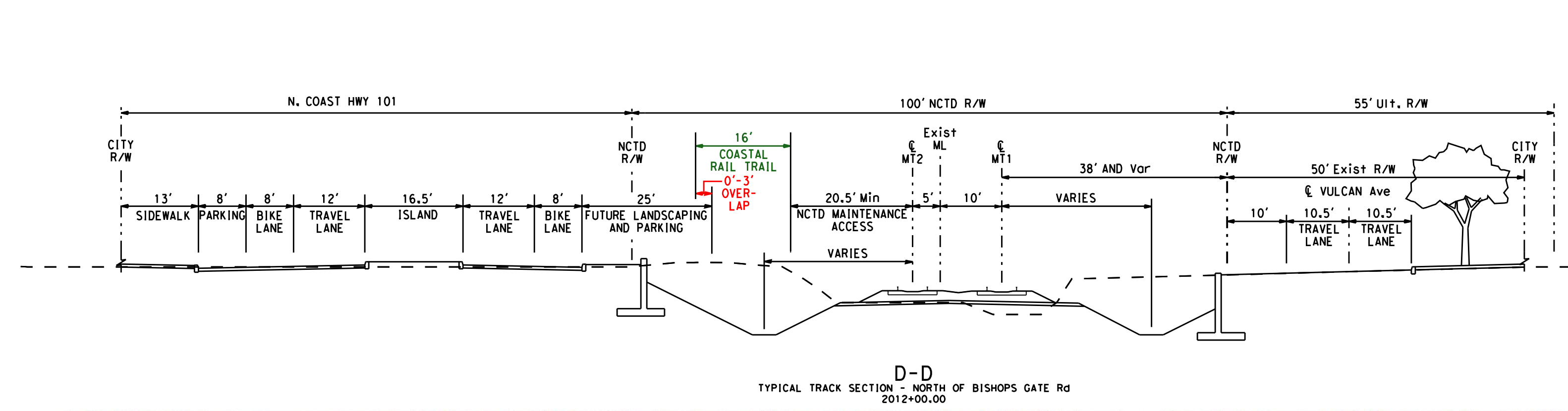
APPENDIX

A ALIGNMENT EXHIBITS

- **Appendix A-1** **La Costa Ave to Encinitas Blvd: West Side Alignment**
La Costa Ave to Leucadia Blvd
Leucadia Blvd to Encinitas Blvd
- **Appendix A-2** **La Costa Ave to Encinitas Blvd: East Side Alignment**
La Costa Ave to Leucadia Blvd
Leucadia Blvd to Encinitas Blvd
- **Appendix A-3** **Encinitas Blvd to Santa Fe Dr**
Near-Term Alignment
Long-Term Alignment
- **Appendix A-4** **City of Encinitas Striping Plan for Coast Highway 101 South of Chesterfield Dr**

APPENDIX

A-1 LA COSTA AVE TO ENCINITAS BLVD: WEST SIDE ALIGNMENT



- EXISTING/PROPOSED TRACK CENTERLINE
- PROPOSED N. COAST HWY 101 STREETSCAPE PROJECT IMPROVEMENTS
- ▨ PROPOSED 21' CITY PARKING ZONE
- ▨ PROPOSED DRAINAGE DITCH (DOUBLE TRACKING)
- ▨ 16' OR MORE AVAILABLE FOR CRT
- ▨ 12'-16' AVAILABLE FOR CRT
- ▨ LESS THAN 12' AVAILABLE FOR CRT

COASTAL RAIL TRAIL ALIGNMENT REVIEW - LA COSTA AVENUE TO LEUCADIA BOULEVARD - WEST SIDE ALIGNMENT

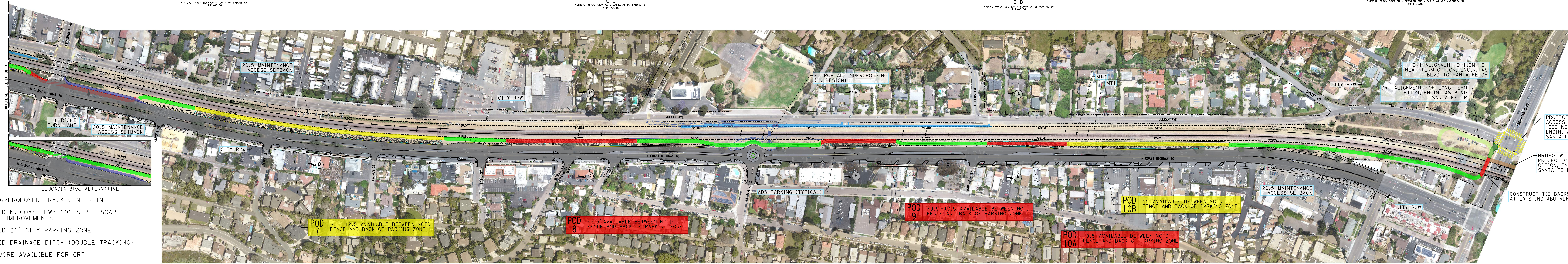
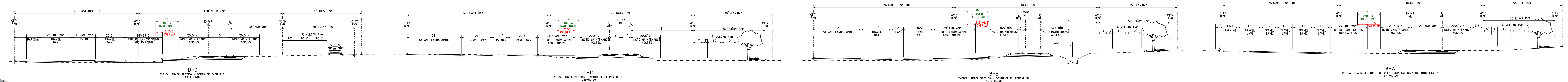
*ROADWAY DESIGN PER NORTH COAST HIGHWAY 101 STREETSCAPE PROJECT, OCT. 2019



DATE PLOTTED => 4/29/2020 TIME PLOTTED => 8:58:19 PM

S:\PROJECT

USERNAME => sandovalar DGN FILE => ...Westside\Westside-Sheet 1.dgn



COASTAL RAIL TRAIL ALIGNMENT REVIEW - LEUCADIA BOULEVARD TO ENCINITAS BOULEVARD - WEST SIDE ALIGNMENT

*ROADWAY DESIGN PER NORTH COAST HIGHWAY 101 STREETSCAPE PROJECT, OCT. 2019



DATE PLOTTED => 4/30/2020

USERNAME => sandovalar
DGN FILE => ...WestsideWestside-Sheet 2.dgn