



DESIGN CONCEPT

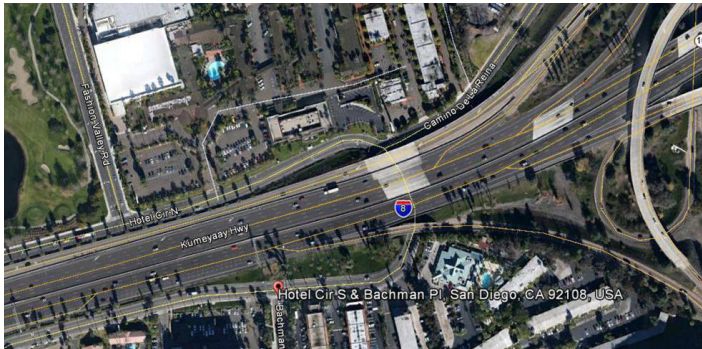
This section presents an opportunity to improve the connection between Hotel Circle and Camino De La Reina under I-8. The design concept:

- Complements existing pedestrian amenities
- Improves safety through traffic calming design and separating users

The engineering detail of a two-way protected bikeway on the north side of Hotel Circle South is being analyzed.



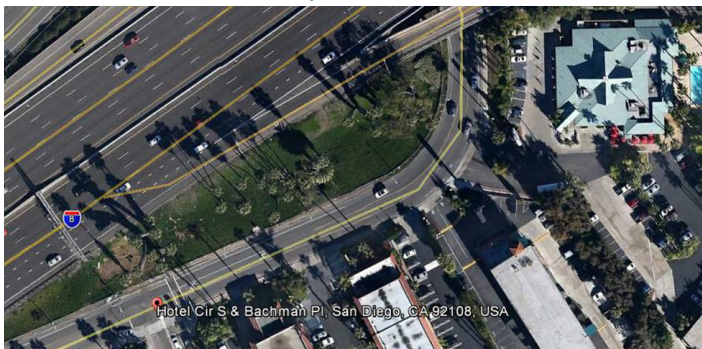
Bachman Pl, Hotel Circle & Camino De La Reina



I-8 underpass west toward Bachman Pl



Hotel Circle South Concept Area



Bachman Pl looking east toward I-8



CONCEPT PLAN

