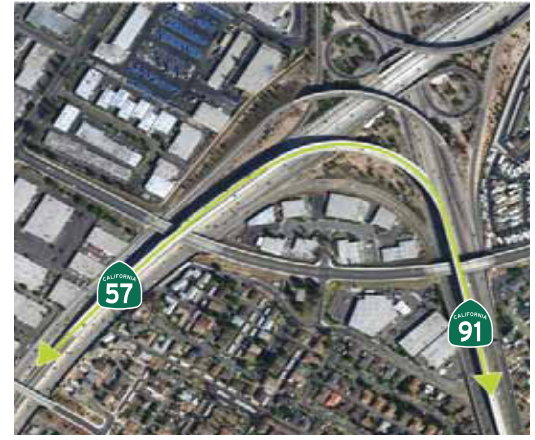


# South Bay Rapid Route Features | March 2016

## Direct Connector

Direct connectors are roadways that link HOV lanes on one freeway to another. A direct connector at State Route 94 (SR 94) is planned as part of a separate project to help maintain consistent traffic speed within the HOV lanes.\*



## South Bay Rapid

The planned South Bay Rapid transit service will utilize the new high occupancy vehicle (HOV) lanes along Interstate 805 (I-805) to connect the Otay Mesa Port of Entry and Downtown San Diego via eastern Chula Vista. The rapid and reliable transit system's upscale, high-frequency service will have signal priority and use dedicated lanes to ensure faster travel times and fewer stops.



El Cajon

## HOV Lane

HOV lanes have been constructed in the center of the freeway between East Palomar Street and the I-805/SR 94 interchange. The new lanes provide South County travelers with expanded transportation choices to bypass congestion, improving travel times for carpoolers, vanpoolers, motorcycles, and solo drivers in permitted clean-air vehicles.



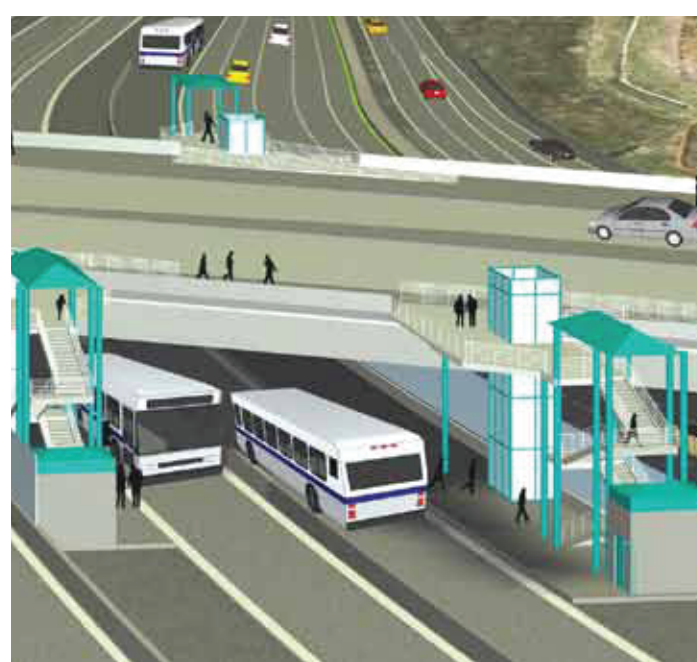
## Direct Access Ramp (DAR)

A new Direct Access Ramp (DAR) is under construction at East Palomar Street in Chula Vista. DARs connect surface streets directly to HOV lanes in the center median, allowing carpoolers, vanpoolers, solo drivers in permitted clean-air vehicles, motorcycles, and transit vehicles to enter the HOV lanes without having to navigate through the freeway's general purpose lanes. This will help improve travel times and reduce congestion.



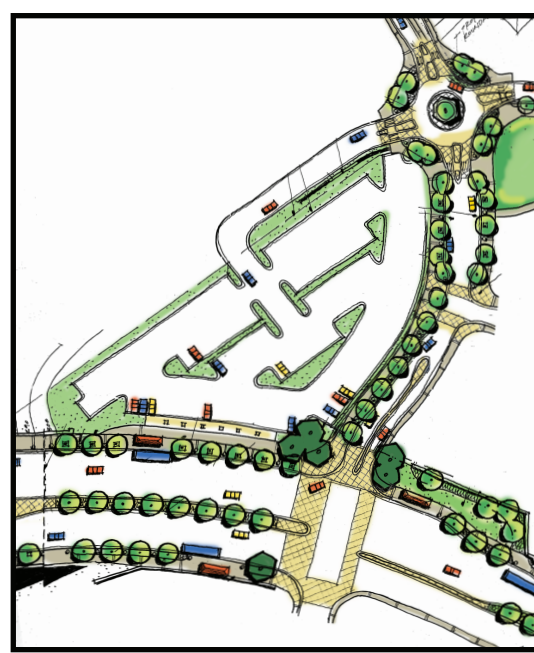
## In-Line Transit Station

New transit stations will be constructed in the center of the freeway at H Street in Chula Vista, East Plaza Boulevard in National City, and 47th Street in San Diego. These stops will provide convenient access to the high-frequency South Bay Rapid and reduce travel times by eliminating the need for transit vehicles to exit the freeway.\*



## Park & Ride

To provide travelers and carpoolers with a convenient location to leave their cars, Park & Rides will be constructed along the South Bay Rapid route. Construction is already underway on the East Palomar Street Park & Ride, adjacent to the DAR and transit station. Additional parking is planned near the in-line transit stations at East Plaza Boulevard and H Street.\*



\*Construction will be scheduled pending funding availability.

