



MILLENNIA

**SOUTH BAY RAPID
GUIDEWAY IMPROVEMENTS
PHASE 2**



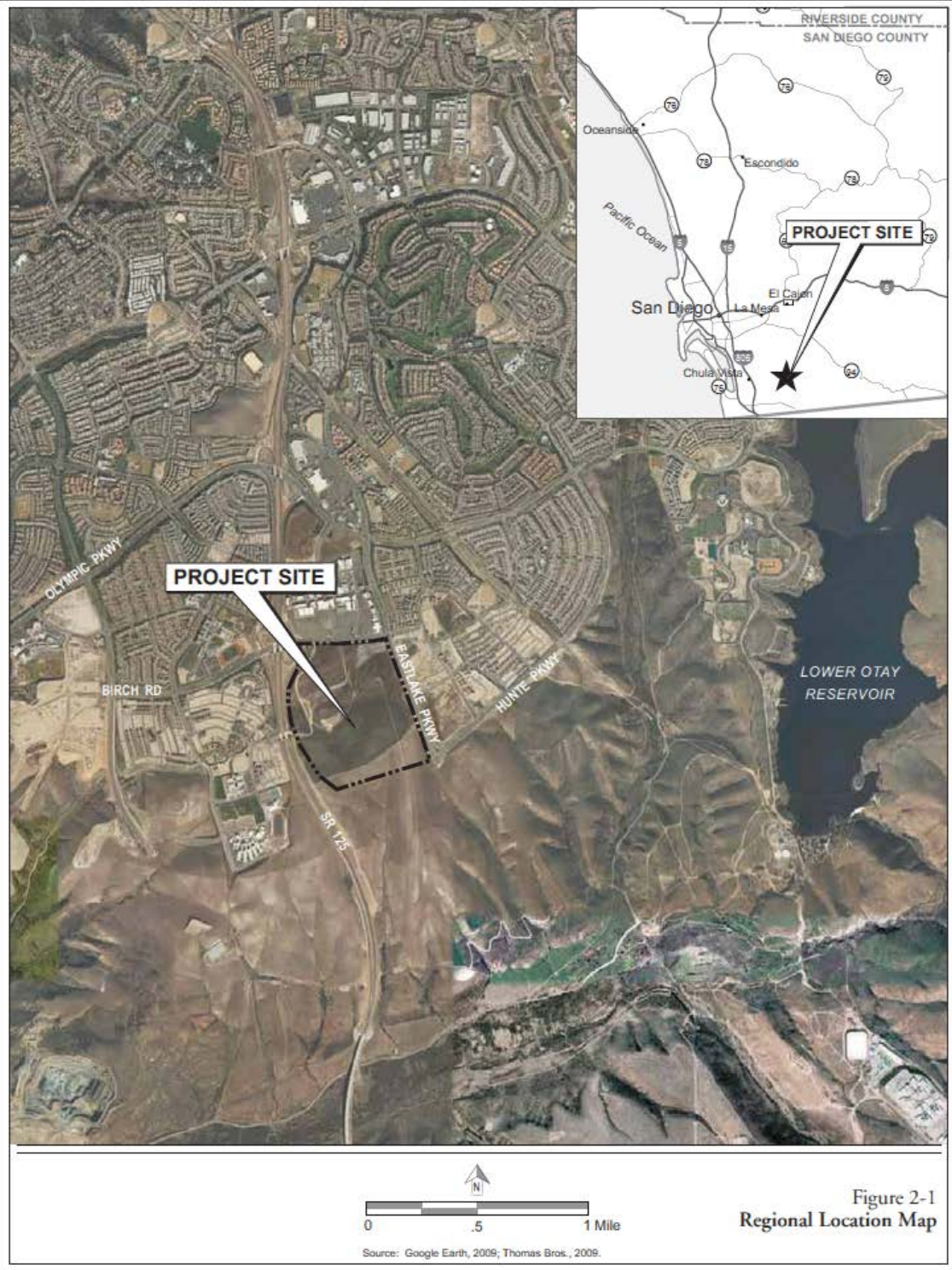


Figure 2-1
Regional Location Map

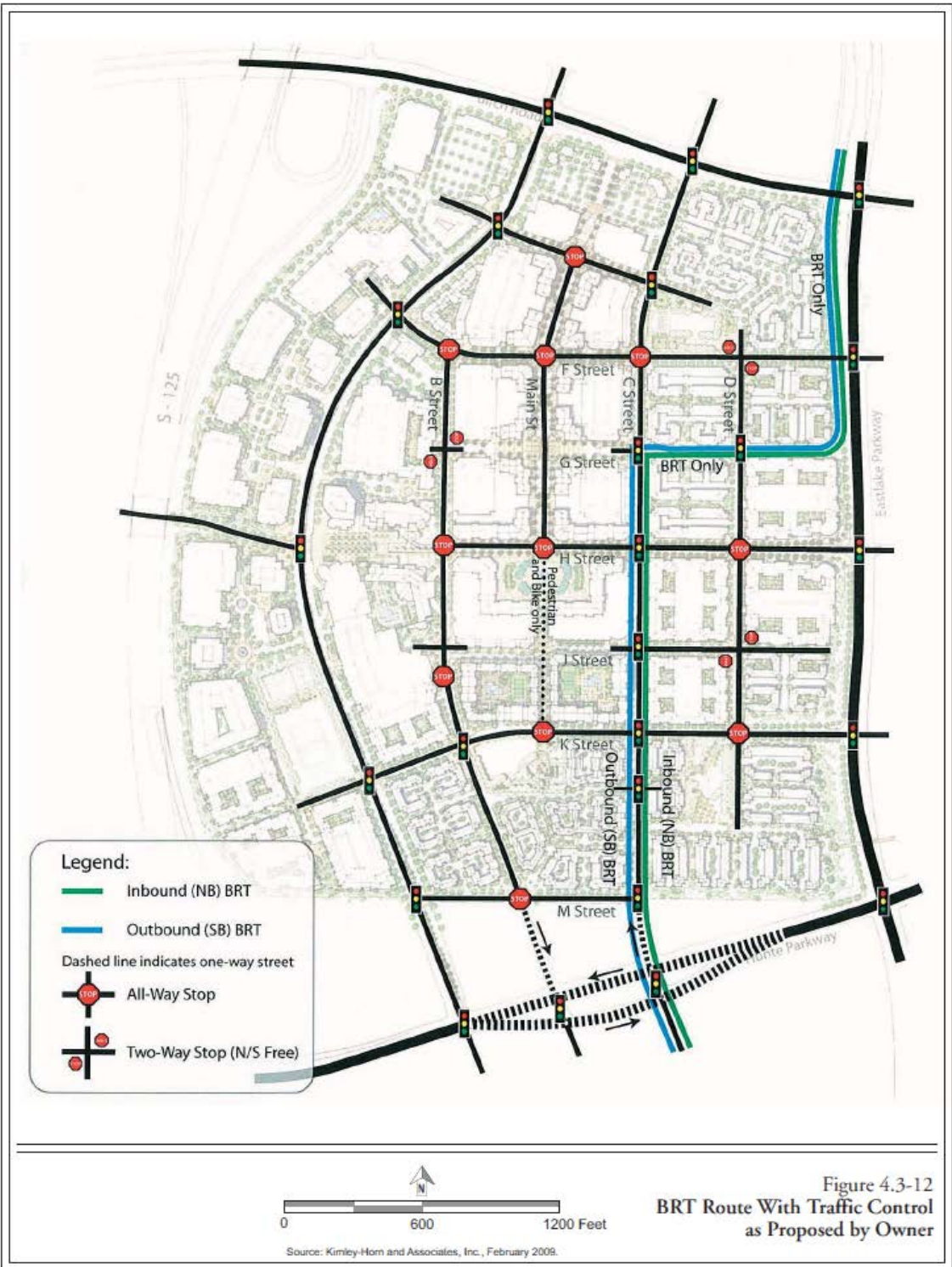
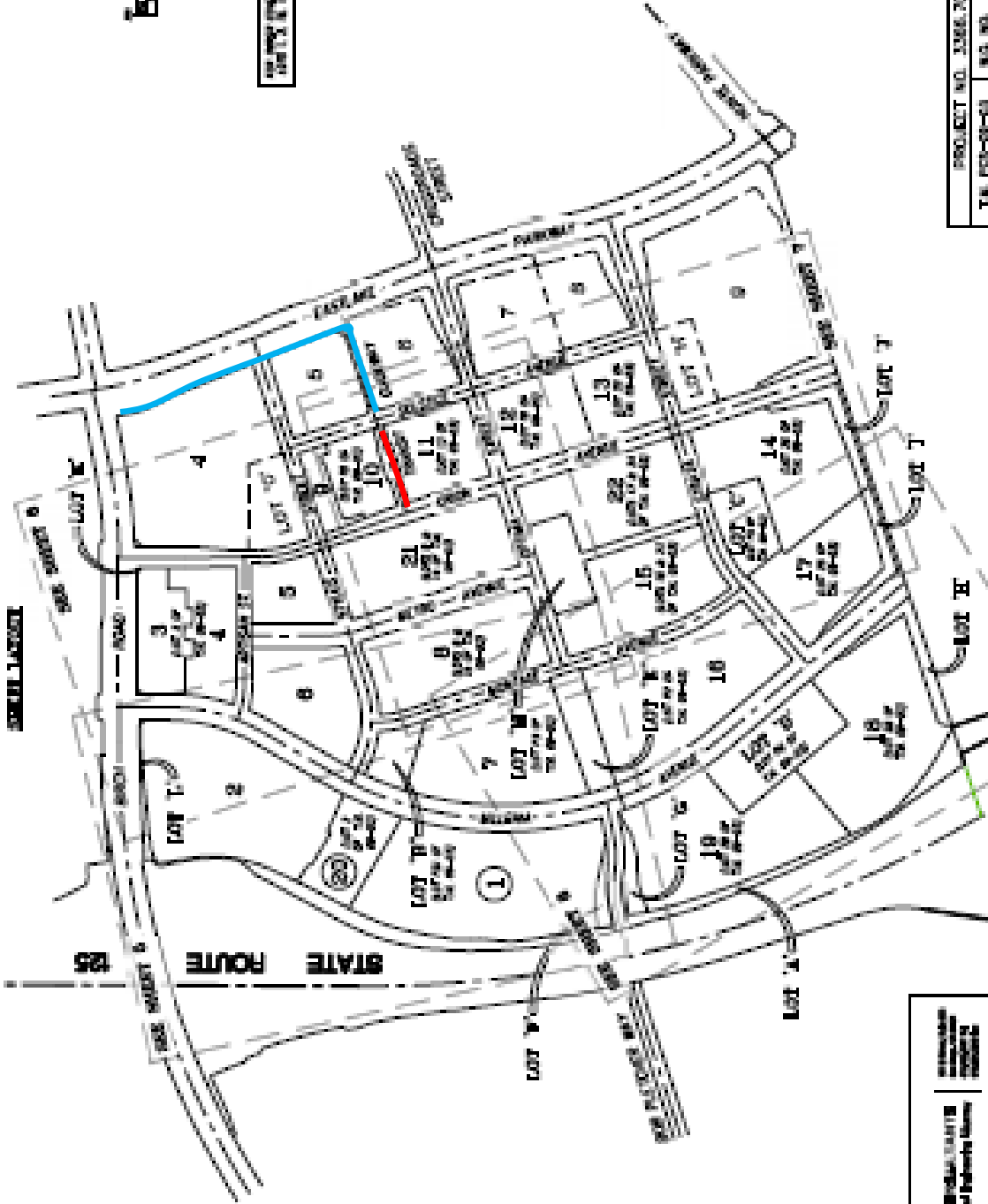


Figure 4.3-12
BRT Route With Traffic Control
as Proposed by Owner

MAP NO.

CHULA VISTA TRACT NO. 09-03 OTAY RANCH MILLENIA PHASE 2 (EASTERN URBAN CENTER)



PREPARED BY: BUREAU OF COMMUNITY PLANNING
DATE: 08/15/2011
PROJECT NO.: 09-03-03

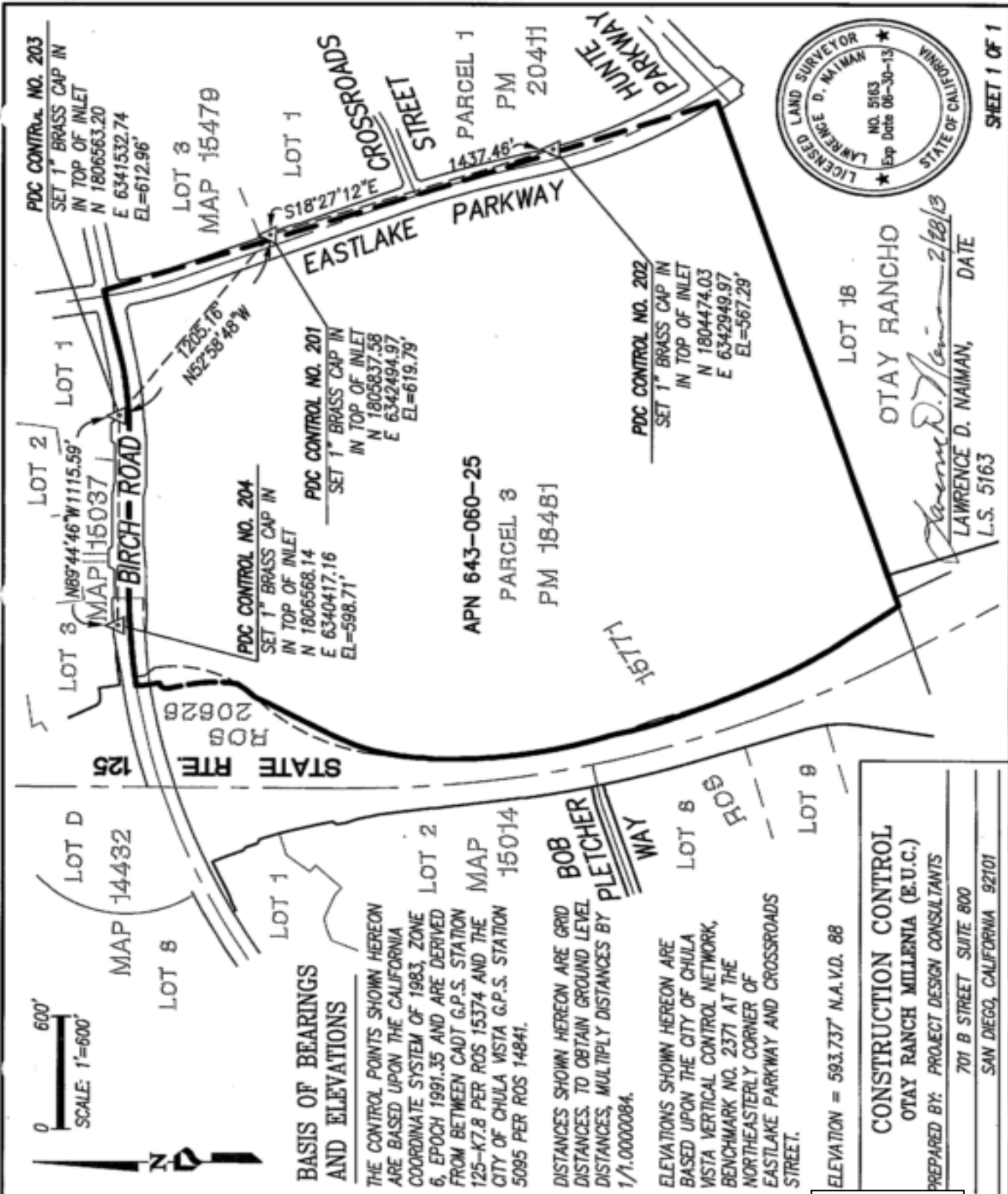
- BUS RAPID TRANSIT (BRT)**
- PHASE 1 (Completed)
 - PHASE 2

PROJECT NO. 09-03-03	REG. NO. 1188
PRODUCT NO. 3388.70	003 03 0904-0341
T.B. P.C.P.-03-03	L.C. 184-178

SHEET 4 OF 8 SHEETS
 SHEET NO. 09-03-03-04
 COUNTY OF SAN DIEGO
 1/4" = 100'



DATE: 08/15/2011
 TIME: 10:00 AM
 BY: [Signature]



0 600'
SCALE: 1"=600'



BASIS OF BEARINGS AND ELEVATIONS

THE CONTROL POINTS SHOWN HEREON ARE BASED UPON THE CALIFORNIA COORDINATE SYSTEM OF 1983, ZONE 6, EPOCH 1991.35 AND ARE DERIVED FROM BETWEEN CADT G.P.S. STATION 125-K7.8 PER ROS 15374 AND THE CITY OF CHULA VISTA G.P.S. STATION 5095 PER ROS 14841.

DISTANCES SHOWN HEREON ARE GRID DISTANCES. TO OBTAIN GROUND LEVEL DISTANCES, MULTIPLY DISTANCES BY 1/1.0000084.

ELEVATIONS SHOWN HEREON ARE BASED UPON THE CITY OF CHULA VISTA VERTICAL CONTROL NETWORK, BENCHMARK NO. 2371 AT THE NORTHEASTERLY CORNER OF EASTLAKE PARKWAY AND CROSSROADS STREET.

ELEVATION = 583.737' N.A.V.D. 88

CONSTRUCTION CONTROL

OTAY RANCH MILLENIA (E.U.C.)
 PREPARED BY: PROJECT DESIGN CONSULTANTS
 701 B STREET SUITE 800
 SAN DIEGO, CALIFORNIA 92101



OTAY RANCHO
 LAWRENCE D. NAIMAN, DATE 2/28/13
 L.S. 5163

4/19/2014