

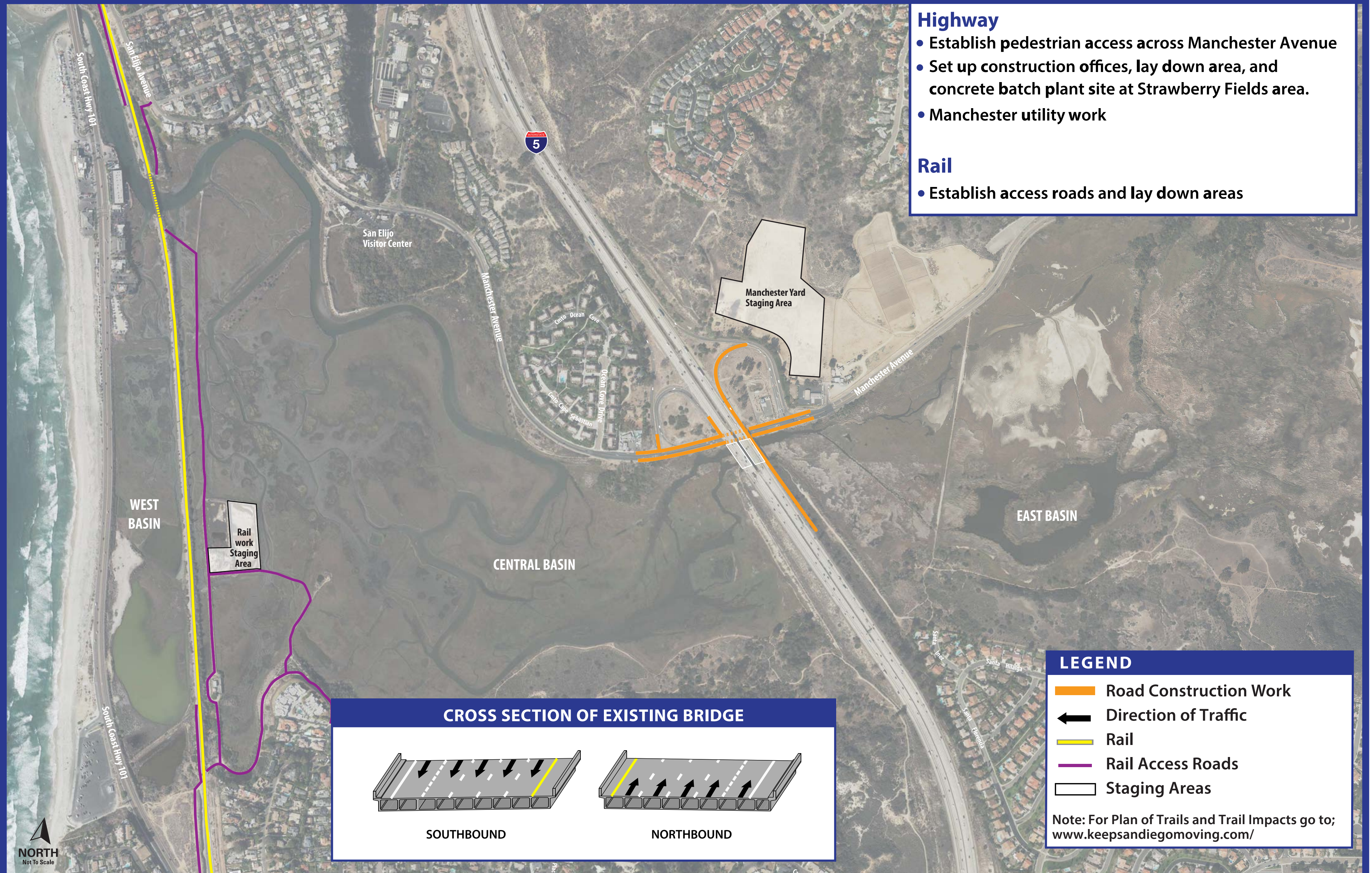
# San Elijo Lagoon Construction Stages: *Stage One - Six Months*

## Highway

- Establish pedestrian access across Manchester Avenue
- Set up construction offices, lay down area, and concrete batch plant site at Strawberry Fields area.
- Manchester utility work

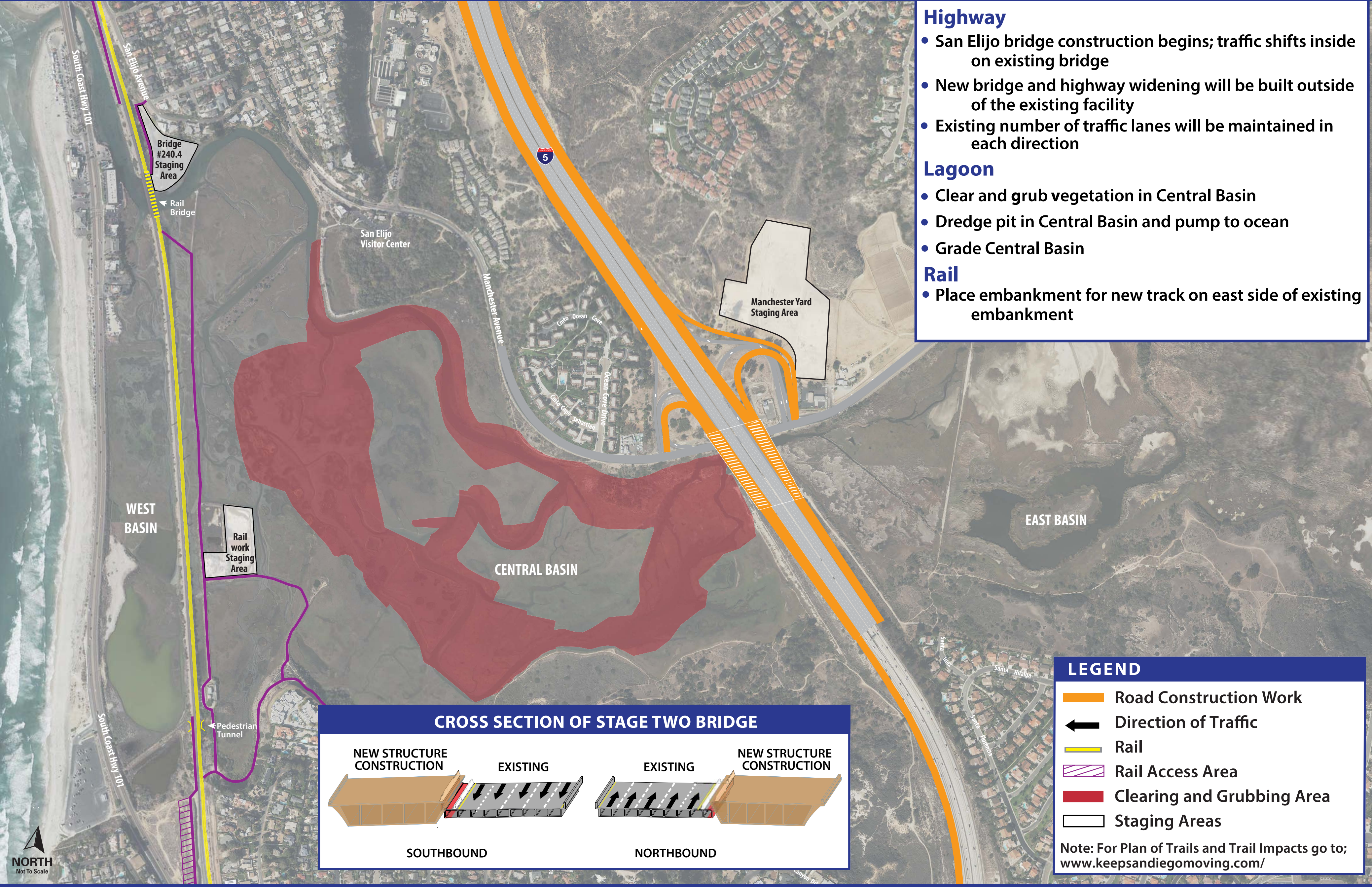
## Rail

- Establish access roads and lay down areas





# San Elijo Lagoon Construction Stages: *Stage Two - 12 Months*





# San Elijo Lagoon Construction Stages: *Stage Three - 12 Months*

