

North Coast Corridor Program

Public Works Plan/Transportation and Resource Enhancement Program Draft Amendment

January 26, 2016



North Coast Corridor
A better environment for the future



Program Overview

A 40-year comprehensive and sustainable solution for the region.

- High Occupancy Vehicle (HOV)/Express Lanes on I-5
- Double tracking the coastal rail line
- Integrated bike, pedestrian, and habitat improvements



PWP/TREP Checks and Balances

- Performance reporting
- Phasing plan ensures balanced approach
- Flexibility to adapt to changed circumstances
- Dialogue continues, it's a 40-year program of improvements



Purpose of Tonight's Meeting

Present and receive comments on the following draft amendments to the Public Works Plan/Transportation and Resource Enhancement Program (PWP/TREP), previously approved by the Coastal Commission in August 2014:

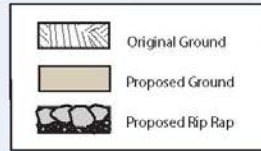
- A. Coastal Rail Trail and Rail Parking Description Changes
- B. Rock Slope Protection/Monitoring and Mitigation Description Changes
- C. Lagoon Protection During Construction/Fueling Setbacks Description Changes
- D. Solana Beach Community Enhancements Description Changes
- E. Visual Resources Documentation/Lighting Standards Changes

Coastal Rail Trail and Rail Parking Description Changes

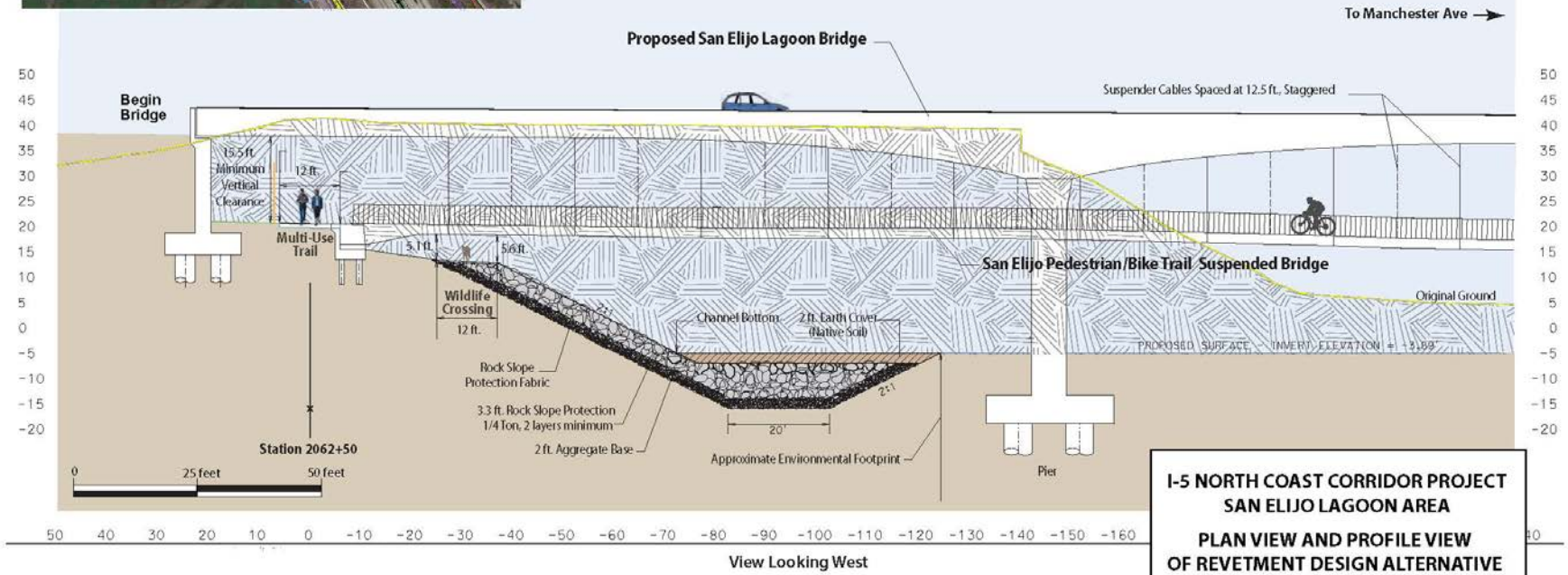


- Adds “adjacent to, or in close proximity” to the LOSSAN Rail Right-of-Way rail parking improvement projects
- Does not identify or select an alignment for Coastal Rail Trail segments or rail parking improvement projects along the corridor
- Clarifies the Coastal Rail Trail locations as within, or immediately adjacent to the LOSSAN Rail Right-of-Way, except in areas where there are environmental, safety, or physical constraints
 - In those constrained areas, the Coastal Rail Trail shall not be located any further than 150 feet from the LOSSAN Rail Right-of-Way, as generally depicted on the approved PWP/TREP maps

Rock Slope Protection/Monitoring and Mitigation Description Changes



Amendment refines rock slope protection limits



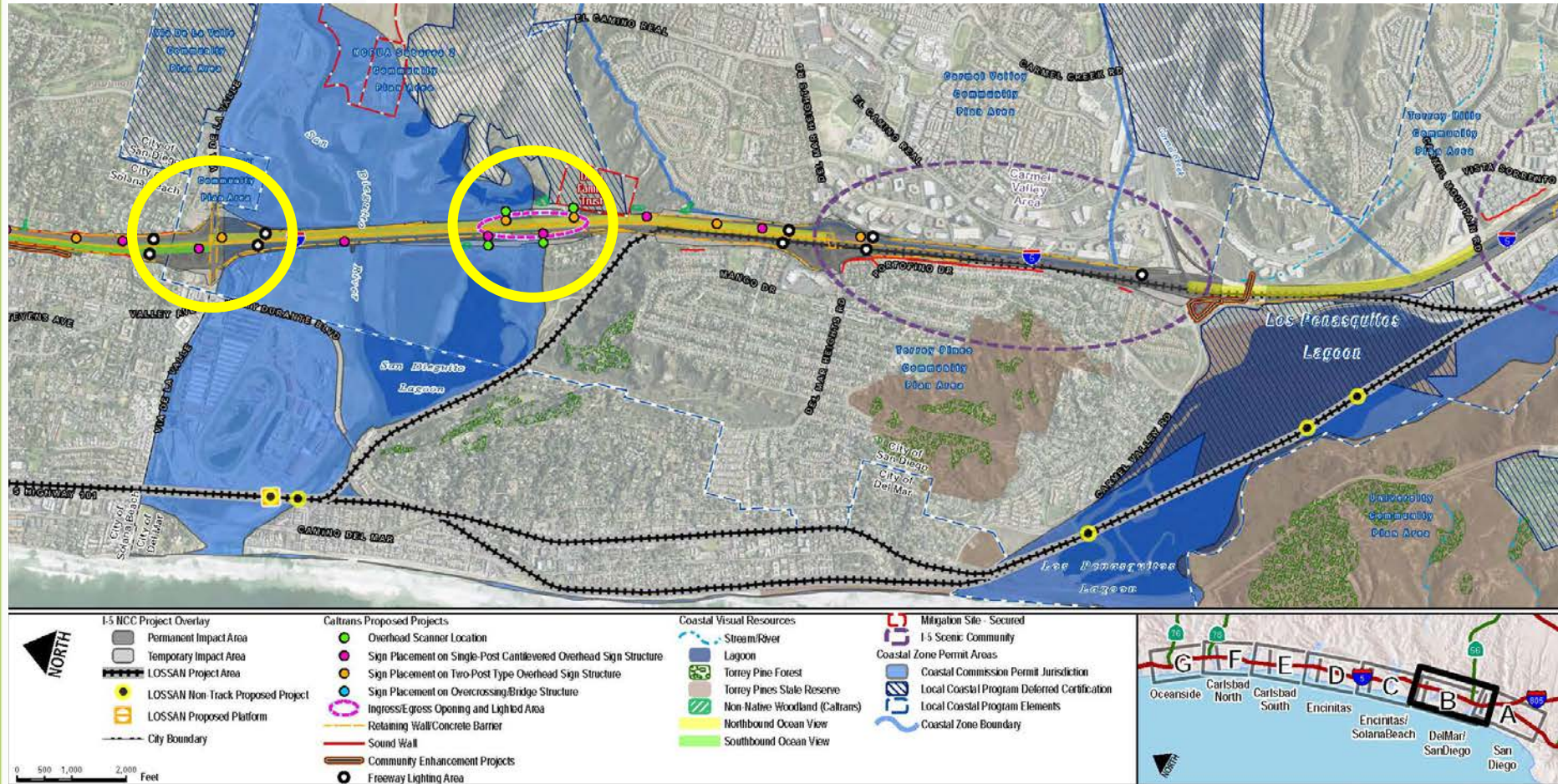
Lagoon Protection During Construction/Refueling Setback Changes



Solana Beach Community Enhancements Description Changes



Visual Resources Documentation/Lighting Standards Changes



- Amendment edits visual resource figures in section 5.7 of the PWP/TREP with updated lighting information

NCC Program Next Steps

- Continue collaboration with Coastal Commission, coastal cities, and resource agencies
- Coastal Commission hearing in spring 2016 for the draft PWP/TREP amendment and San Elijo Lagoon highway project
- Pre-construction public meeting in summer 2016
- Break ground in Phase 1 of the NCC Program
 - Extend carpool lanes from Lomas Santa Fe Drive to State Route 78 (SR 78)
 - Replace and lengthen San Elijo and Batiquitos lagoon highway and rail bridges
 - Construct sound walls on private property from Manchester Avenue to SR 78
 - Add bike/walking paths at Encinitas Boulevard and Santa Fe Drive interchanges

For More Information

The PWP/TREP draft amendment is hosted at:

KeepSanDiegoMoving.com/NCC