



North Coast Corridor
A better environment for the future

I-5/Genesee Avenue Interchange Project



SANDAG

TransNet



KeepSanDiegoMoving.com

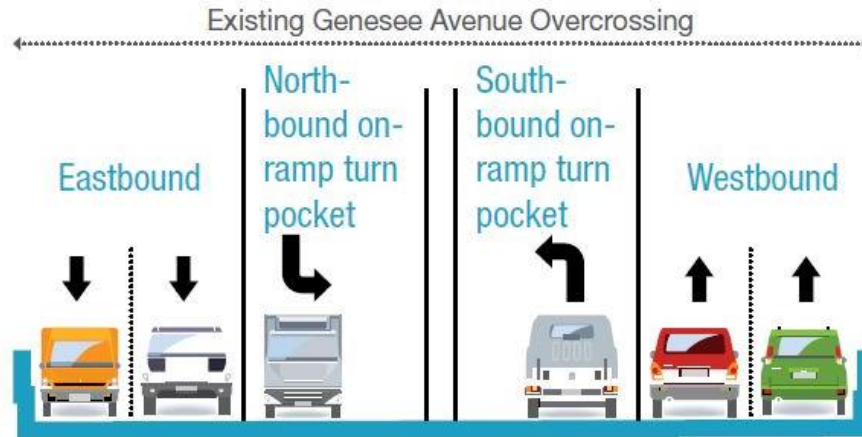
Project Purpose

- Improve east and west traffic flow on Genesee Ave.
- Enhance access to and from I-5
- Replace and widen existing Genesee Ave. overcrossing
- Construct new, separated bike path west of I-5 linking the Sorrento Valley COASTER station with UC San Diego and area businesses
- Accommodate local and regional employment and population growth
- Accommodate future carpool lanes on I-5



New Bridge Cross-Section

Convert the existing six lane overcrossing into 10 lanes



New Bridge Cross-Section



Bridge Simulation



Sorrento Valley to UC San Diego Area Bike Path

A new, separated bike path on the west side of I-5 will connect the Sorrento Valley COASTER station & the UC San Diego area



Currently, cyclists must use freeway shoulder to travel from Sorrento Valley to UC San Diego.



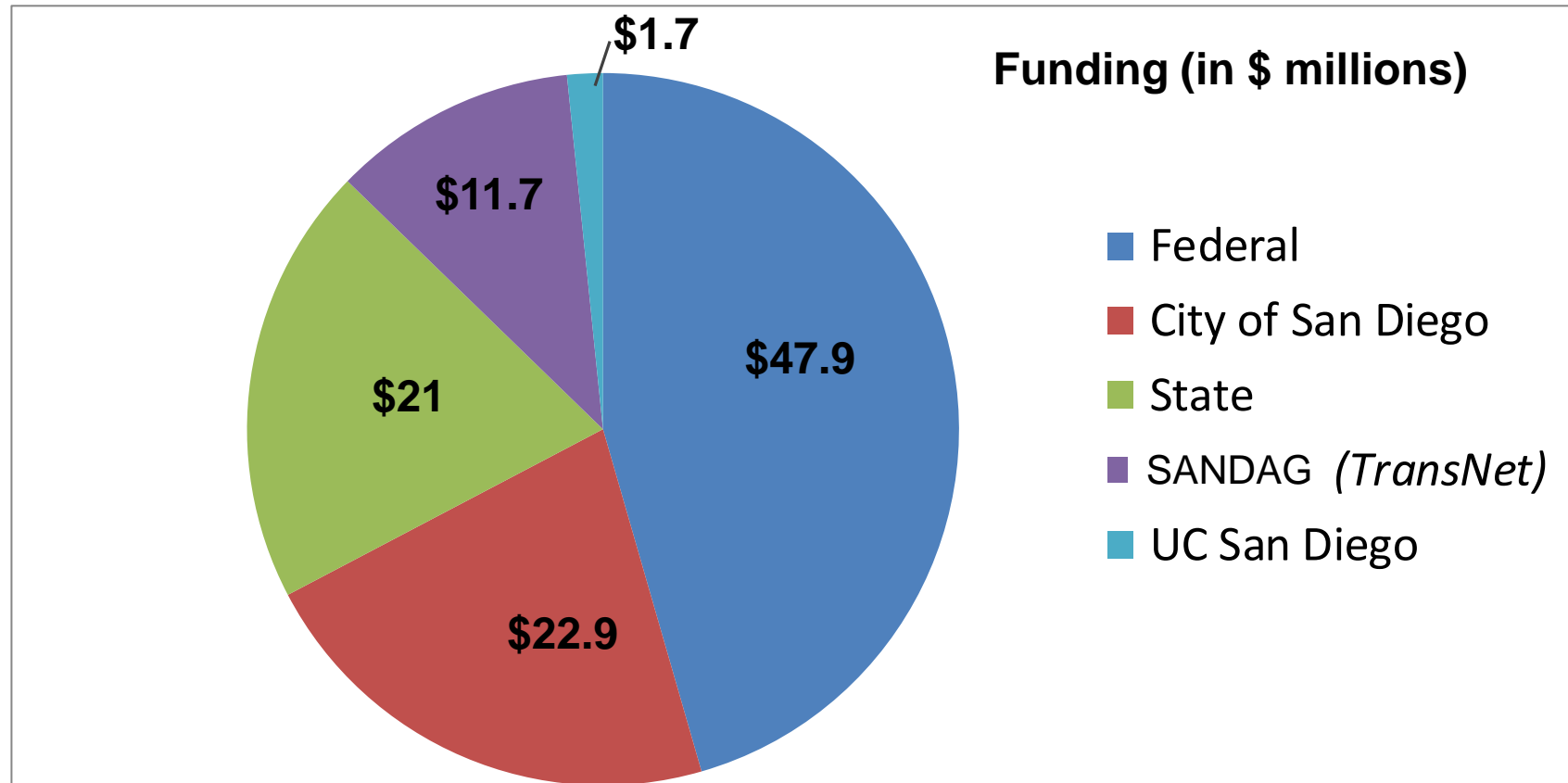
The new bike path will allow bicyclists to travel in both directions from Roselle Street to Voigt Drive separated from vehicles.

Closing Gaps in the Bicycle Trail Network

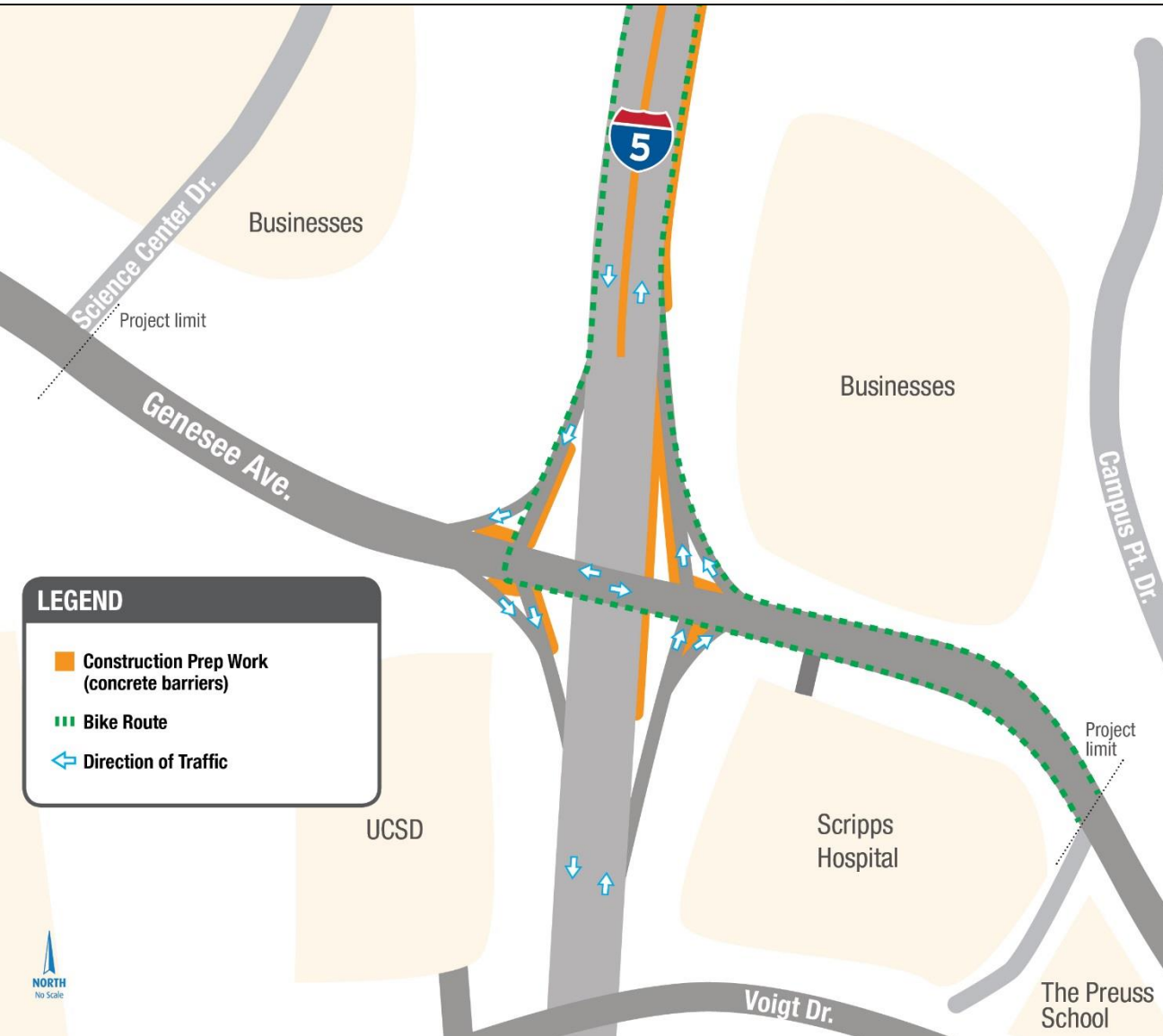


Project Schedule and Funding

- Construction begins in February 2015
- Construction completed in 2017



Project Timeline – Stage 1 (Approx. 3 weeks)



What to expect this stage:

- Intermittent traffic delays but no lane closures
- No pedestrian access within project limits
- Bike access maintained via I-5 shoulder
- Placement of concrete barriers for construction preparation

Project Timeline – Stage 2 (Approx. 16 months)



What to expect this stage:

- Intermittent traffic delays, overnight lane closures as needed
- Genesee Ave. widening
- Genesee Ave. bridge construction (north side of bridge)
- Retaining wall construction
- Bike access maintained via I-5 shoulder
- No pedestrian access within project limits
- Bike path construction west of I-5

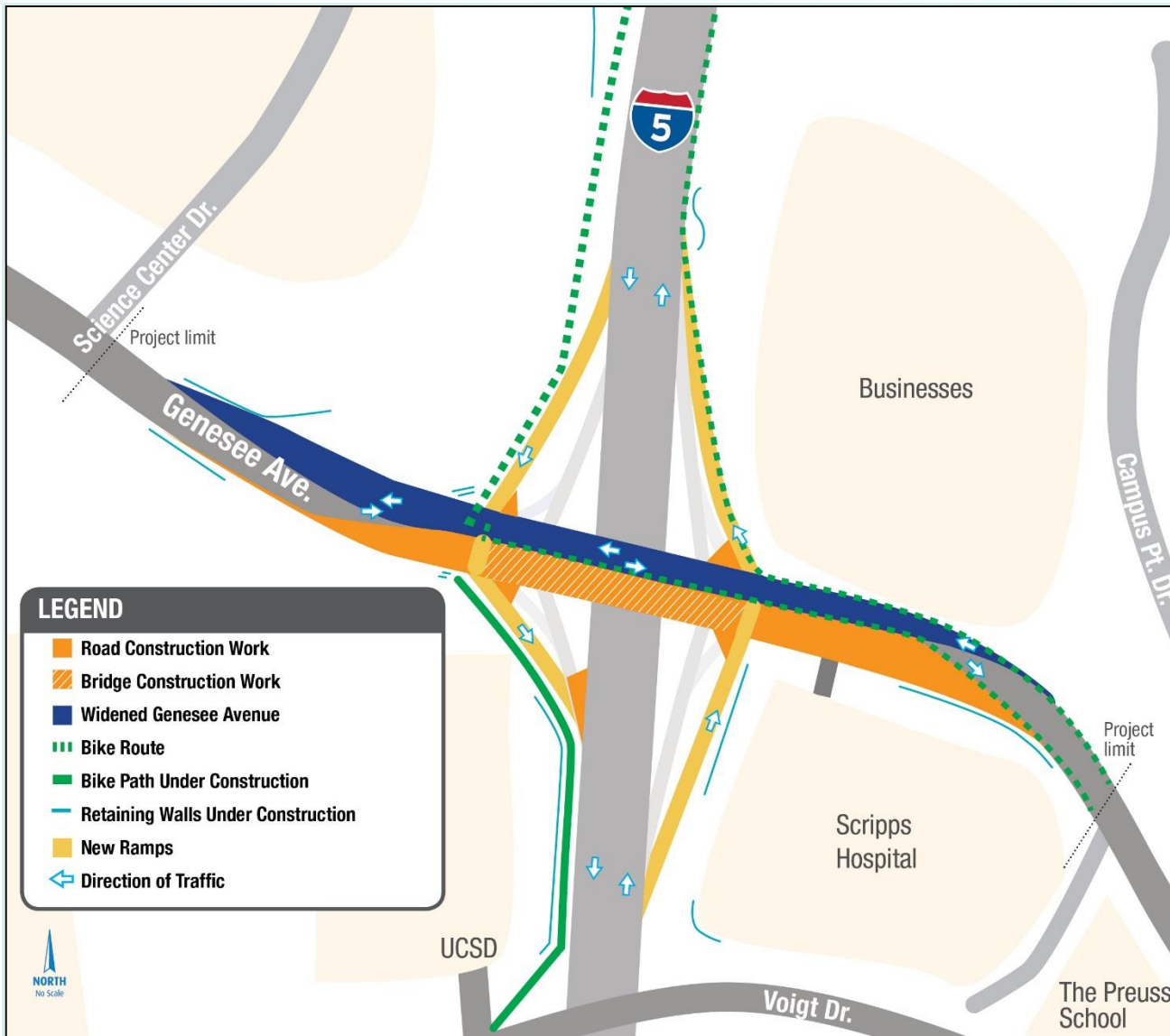
Project Timeline – Stage 3 (Approx. 9 days)



What to expect this stage:

- Median work on Genesee Ave.
- Traffic on Genesee Ave. bridge shifts to new north side of bridge
- Genesee Ave. reduced to four lanes within project limits
- I-5/Genesee Ave. on/off ramp weekend closures
- No pedestrian access within project limits
- No bike access during on/off ramp weekend closures
- Retaining wall construction

Project Timeline – Stage 4 (Approx. 14 months)



What to expect this stage:

- Intermittent traffic delays, overnight lane closures as needed
- No pedestrian access within project limits
- Northbound bike access maintained via I-5 shoulder
- Southbound bike access available via new bike path
- Retaining wall construction
- Genesee Ave. bridge construction
- Genesee Ave. widening

Project Timeline – Stage 5 (Approx. 4 months)



What to expect this stage:

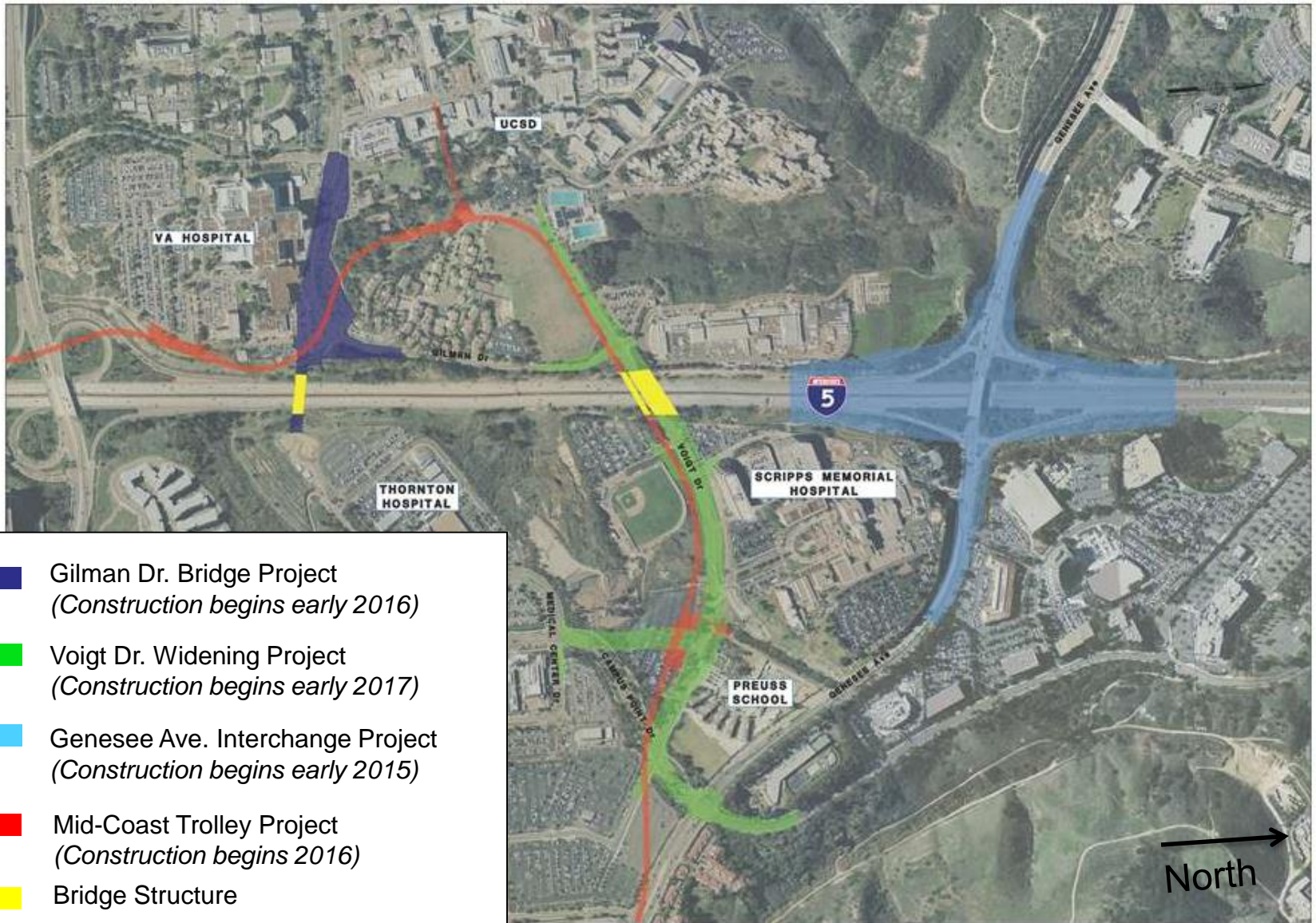
- Construction of bike/pedestrian overcrossing
- Final re-striping of new Genesee Ave. bridge
- Project completion!

What to Expect During Construction

- Intermittent traffic delays, construction noise, and heavy equipment near the project area
- The majority of lane closures will take place overnight
- Access points to nearby hospitals will be maintained throughout construction
- Bike access during construction will be maintained on the I-5 shoulder



Other Golden Triangle Area Projects, Near I-5



Stay Informed

- Sign up for project updates and visit the webpage at KeepSanDiegoMoving.com/Genesee
- Call the project hotline at (888) 720-9321 or email us at I-5Genesee@KeepSanDiegoMoving.com

shift

a change in direction

Shift is the source for
transportation solutions and
construction information in
the San Diego region

ShiftSanDiego.com

  #ShiftSanDiego