

Acquisition Number: 14
 Name: Mendocino
 Acquisition Date: 07/19/2010
 Location: Elfin Forest
 Acres: 19.72

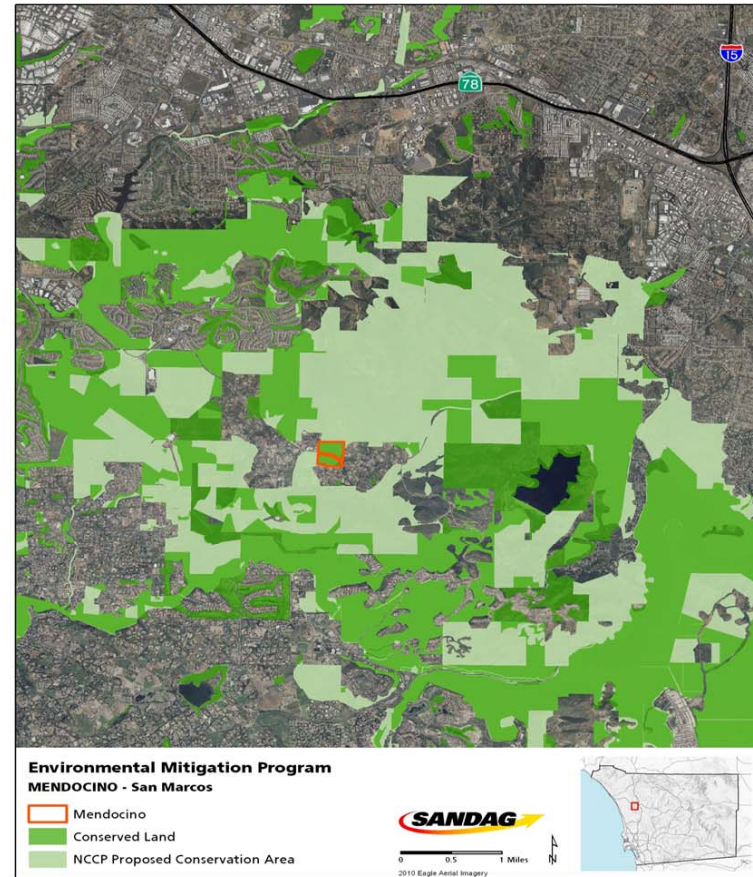
Habitat Types:		Acres:
CSS occupied with CAGN	18.47	
Native Grassland	0.59	
Non-native Grassland	0.5	
Southern Willow Scrub	0.14	
Mulefat Scrub	0.02	

2030 RTP Project Mitigation:		Type:	Acres:
I-805 (SR 905 to SR 54)	Upland	12.58	
Local Street (I-805 to Carrol Canyon)	Uplands	1.2	
Local Street (Future Mit Bank)	Uplands	5.94	

Ownership: County San Diego
Management: County San Diego
Conservation Easement to SANDAG: Yes
Native Habitat Restoration Proposed: No



Mendocino, Elfin Forest



NCCP = Natural Community Conservation Planning (Program)